

# MVP Studies

*For Marching Band*

winds by: John M. Meehan  
percussion by: Vinnie Angelo

## Exercise #1

Exercise #1 is a 25-measure piece in 4/4 time, written for Bb Bass Clarinet. The notation is on a single staff with a treble clef. The key signature has one flat (Bb). The melody consists of eighth and quarter notes, often beamed in pairs or groups of four. Measures 1-8: C4, D4, E4, F4, G4, A4, B4, C5. Measures 9-16: D4, C4, B3, A3, G3, F3, E3, D3. Measures 17-24: C4, D4, E4, F4, G4, A4, B4, C5. Measure 25: D4, C4, B3, A3, G3, F3, E3, D3. Measure numbers 9, 15, 21, and 25 are indicated at the start of their respective staves.

## Exercise #2

Exercise #2 is a 27-measure piece in 4/4 time, written for Bb Bass Clarinet. The notation is on a single staff with a treble clef. The key signature has one flat (Bb). The melody consists of eighth and quarter notes, often beamed in pairs or groups of four. Measures 1-8: C4, D4, E4, F4, G4, A4, B4, C5. Measures 9-16: D4, C4, B3, A3, G3, F3, E3, D3. Measures 17-24: C4, D4, E4, F4, G4, A4, B4, C5. Measure 25: D4, C4, B3, A3, G3, F3, E3, D3. Measure 27: C4, D4, E4, F4, G4, A4, B4, C5. Measure numbers 1, 9, 15, 21, and 27 are indicated at the start of their respective staves.

**MVP Studies**  
*For Marching Band***Exercise #3**

Exercise #3 is a 16-measure piece in 4/4 time. The notation is written on a single staff. Measures 1-4: A half note G4, quarter note A4, quarter note B4, quarter note C5, quarter rest, quarter note D5, quarter note E5, quarter note F5, quarter note G5. Measures 5-8: A half note G4, quarter note F#4, quarter note E4, quarter note D4, quarter note C4, quarter note B3, quarter note A3, quarter note G3. Measures 9-12: A half note G4, quarter note F#4, quarter note E4, quarter note D4, quarter note C4, quarter note B3, quarter note A3, quarter note G3. Measures 13-16: A half note G4, quarter note F#4, quarter note E4, quarter note D4, quarter note C4, quarter note B3, quarter note A3, quarter note G3. The piece ends with a double bar line.

1  
7  
10  
13

**Exercise #4**

Exercise #4 is a 16-measure piece in 4/4 time. The notation is written on a single staff. Measures 1-4: A half note G4, quarter note A4, quarter note B4, quarter note C5, quarter note D5, quarter note E5, quarter note F5, quarter note G5. Measures 5-8: A half note G4, quarter note F#4, quarter note E4, quarter note D4, quarter note C4, quarter note B3, quarter note A3, quarter note G3. Measures 9-12: A half note G4, quarter note F#4, quarter note E4, quarter note D4, quarter note C4, quarter note B3, quarter note A3, quarter note G3. Measures 13-16: A half note G4, quarter note F#4, quarter note E4, quarter note D4, quarter note C4, quarter note B3, quarter note A3, quarter note G3. The piece ends with a double bar line.

1  
4  
7  
11  
15

# MVP Studies

For Marching Band



## Exercise #11



17

21

25

### Exercise #12

1

7

10

13

18

# MVP Studies

*For Marching Band*

(Wind Only Supplement)

winds by: John M. Meehan

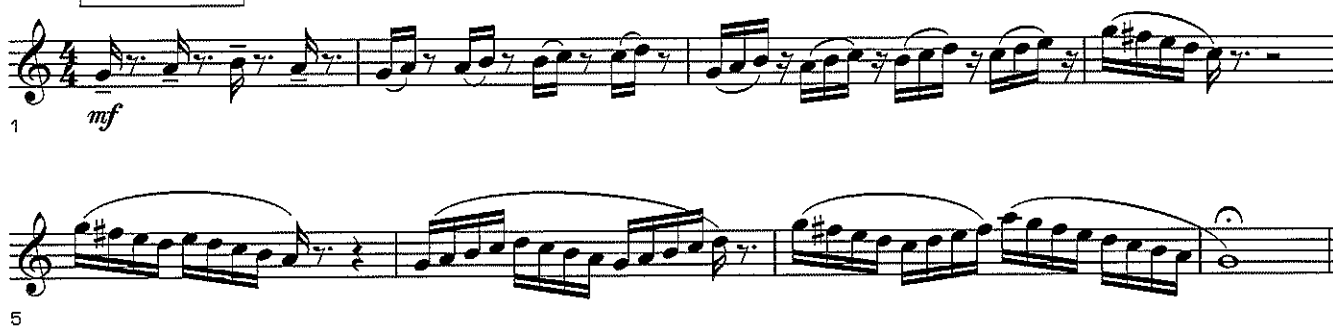
## Exercise A



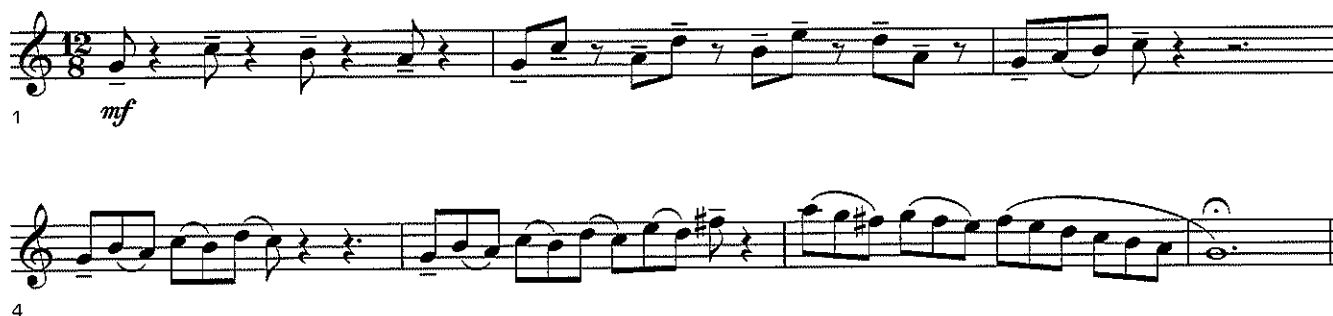
## Exercise B



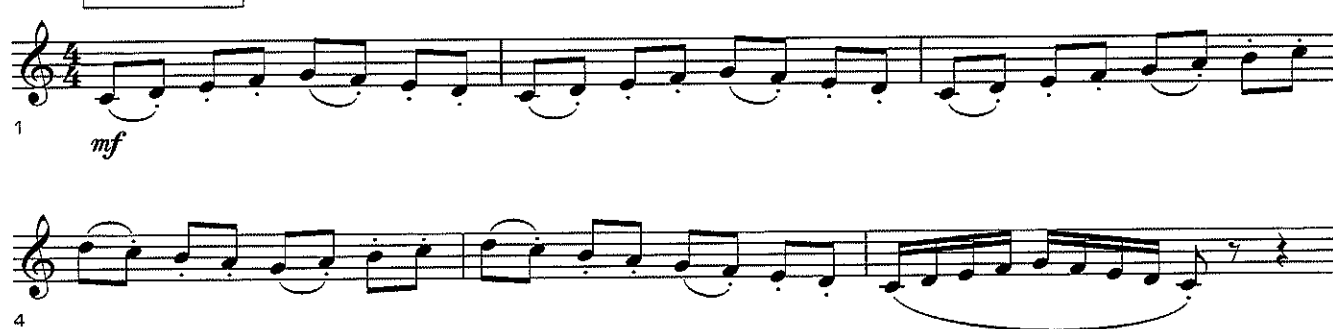
## Exercise C



## Exercise D



## Exercise E



**MVP Studies***For Marching Band*  
[Wind Only Supplement]

7



10



13



16



19



22

**Exercise F**

1



5



9



13

**MVP Studies**  
*For Marching Band*  
[Wind Only Supplement]

Progression #1

Musical notation for Progression #1, Bb Bass Clarinet part. The key signature is one flat (Bb) and the time signature is 4/4. The melody consists of two phrases, each spanning four measures. The first phrase starts on a middle C (C4) and moves up stepwise to a half note G4 (G5 in bass clef). The second phrase starts on a half note F4 (F5 in bass clef) and moves up stepwise to a half note Bb4 (Bb5 in bass clef). Both phrases are marked with a crescendo hairpin. The first phrase begins with a dynamic of *mf* and ends with *f*. The second phrase begins with a dynamic of *f* and ends with *ff*. A first ending bracket is placed below the first measure of each phrase.

Progression #2

Musical notation for Progression #2, Bb Bass Clarinet part. The key signature is one flat (Bb) and the time signature is 4/4. The melody consists of two phrases, each spanning four measures. The first phrase starts on a middle C (C4) and moves up stepwise to a half note G4 (G5 in bass clef). The second phrase starts on a half note F4 (F5 in bass clef) and moves up stepwise to a half note Bb4 (Bb5 in bass clef). Both phrases are marked with a crescendo hairpin. The first phrase begins with a dynamic of *ff* and ends with *fff*. The second phrase begins with a dynamic of *fff* and ends with *fff*. A first ending bracket is placed below the first measure of each phrase.

# Technique Essentials

Music By: Wayne R. Downey  
Percussion By: Shawn Glyde

Tenor Saxophone / B.C.

① ♩ = 120 - 140

mf

mf

mf

mf

mf

mf

f

②

mf

mf

mf

mf

mf

mf

f

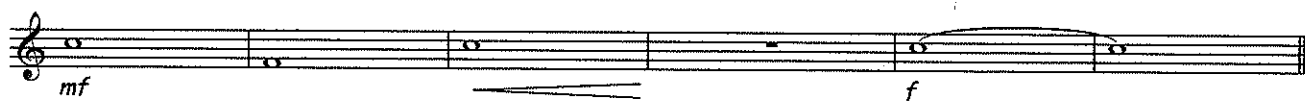
③

mf

mf



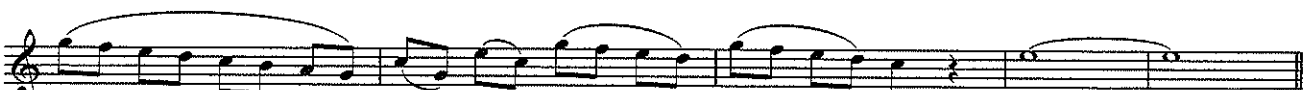
# Tenor Saxophone



④



⑤



Tenor Saxophone